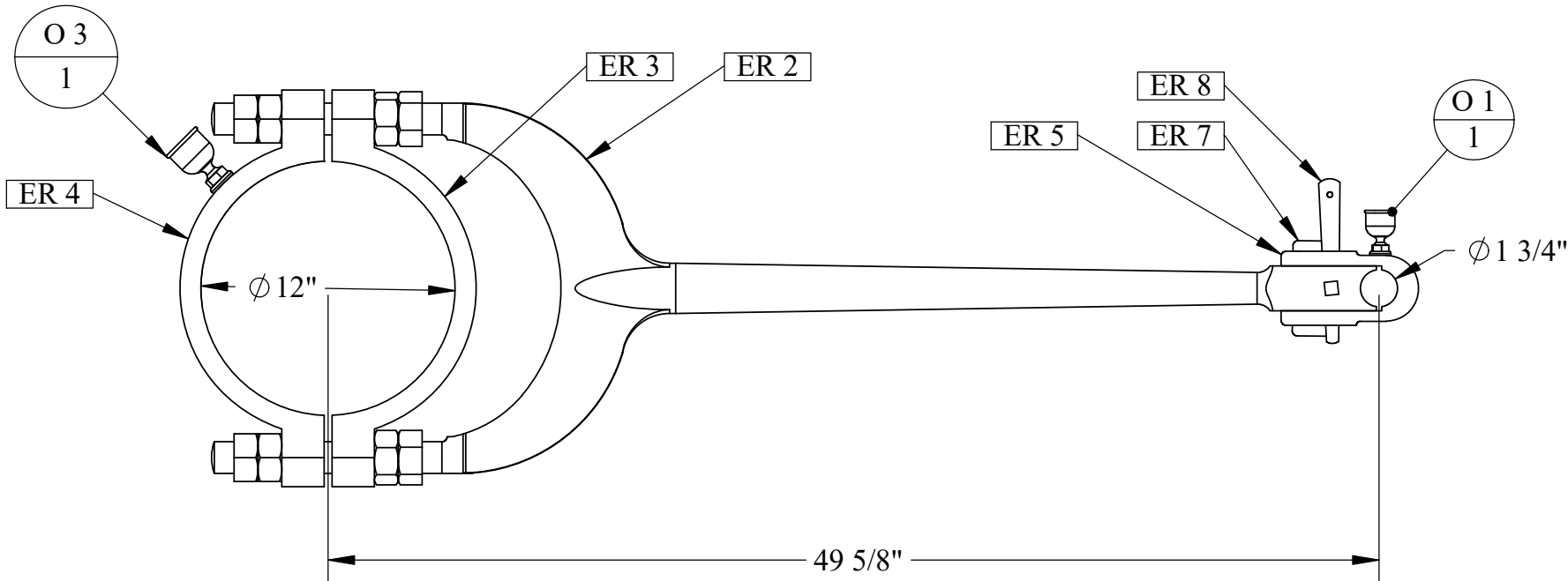
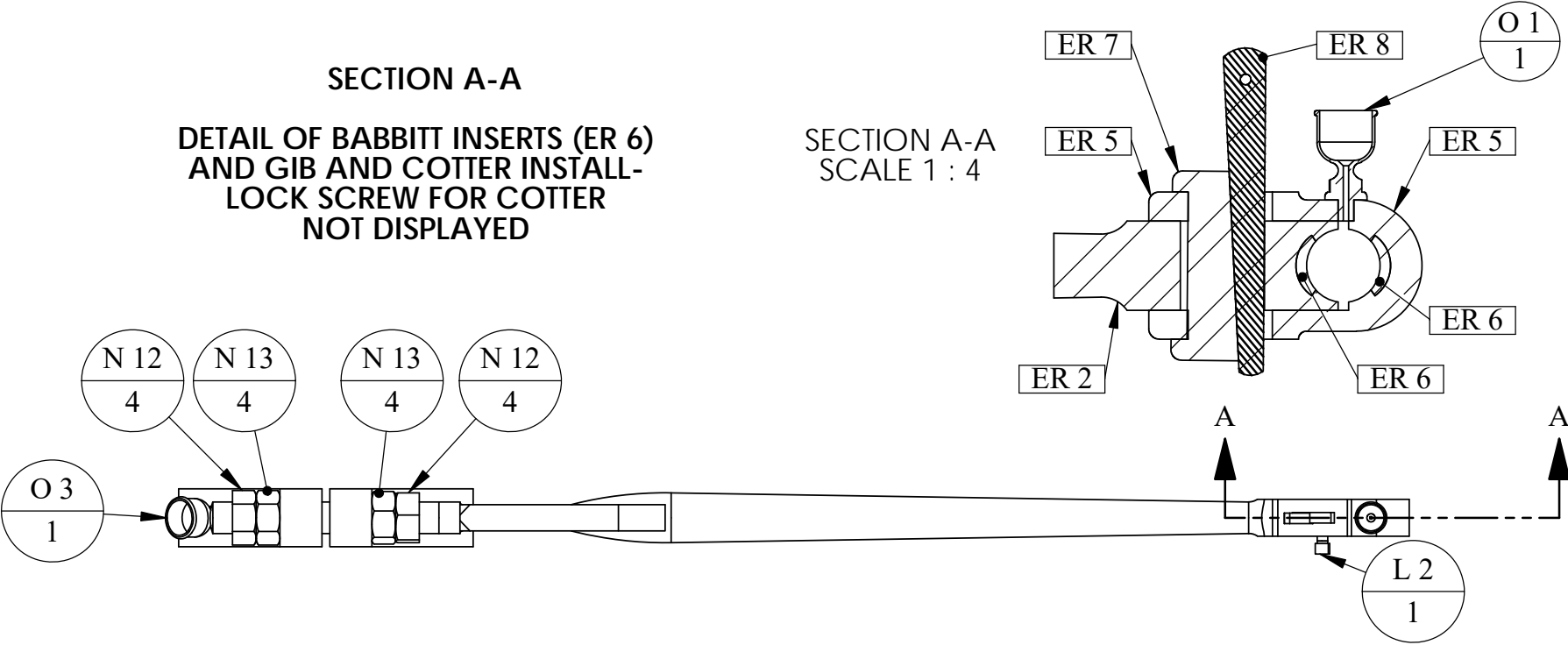


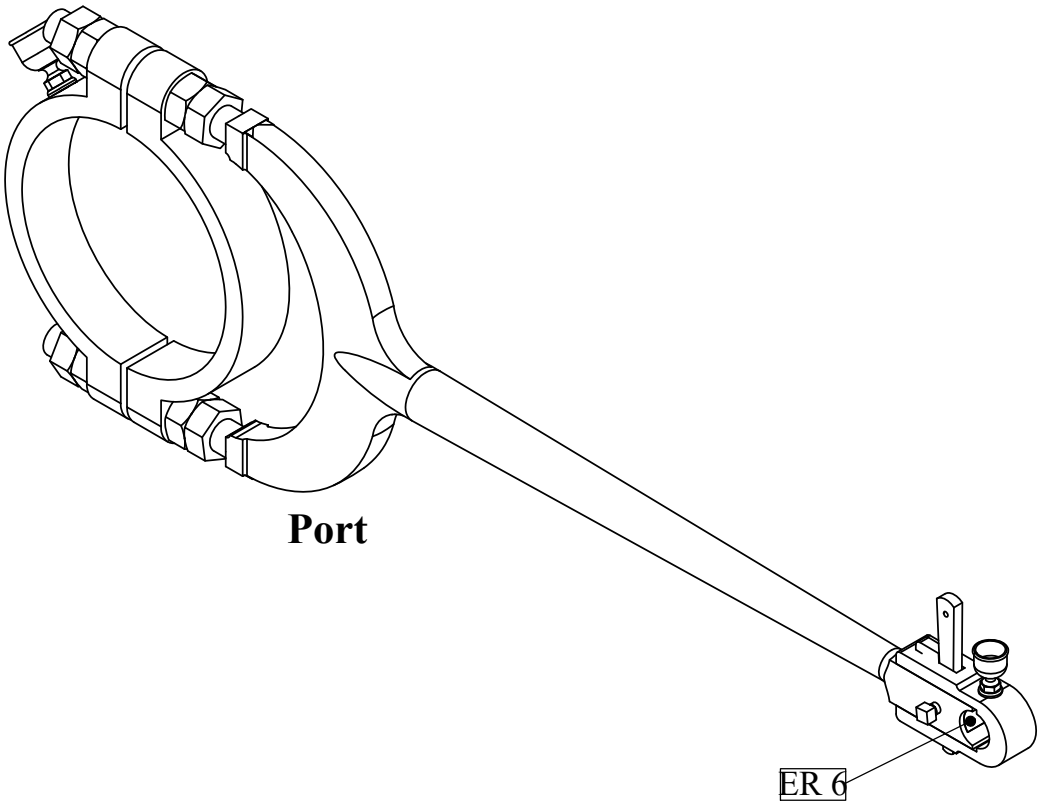
SECTION A-A
DETAIL OF BABBITT INSERTS (ER 6)
AND GIB AND COTTER INSTALL-
LOCK SCREW FOR COTTER
NOT DISPLAYED

SECTION A-A
SCALE 1 : 4



NOTE:
THE PORT VERSION OF THE ECCENTRIC ROD
IS SHOWN HERE - THE STARBOARD VERSION
HAS THE ROD (ER 2) FLIPPED TOP TO BOTTOM
SO THE COTTER LOCKING SCREW IS FACING
FORWARD WHEN INSTALLED--OIL CUPS UP

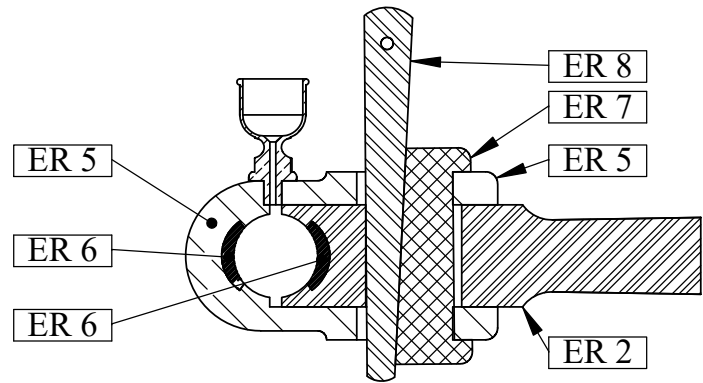
PART NUMBER	DESCRIPTION	QTY.
ER 2	Eccentric Rod	1
ER 3	Eccentric Strap	1
ER 4	Eccentric Strap With Lube	1
ER 5	Eccentric Rod Bearing Strap	1
ER 6	Eccentric Rod Babbitt Bearing	2
ER 7	Eccentric Rod Gib	1
ER 8	Eccentric Rod Cotter Pin	1
O 1	Oil Cup- Small	1
O 3	Oil Cup- Medium	1
L 2	Square Locking Screw 1/2" x 7/8"	1
N 12	1-1/2" Hex Nut	4
N 13	1-1/2" Hex Nut-Locking	4



U.S.S. Monitor Steam Engine

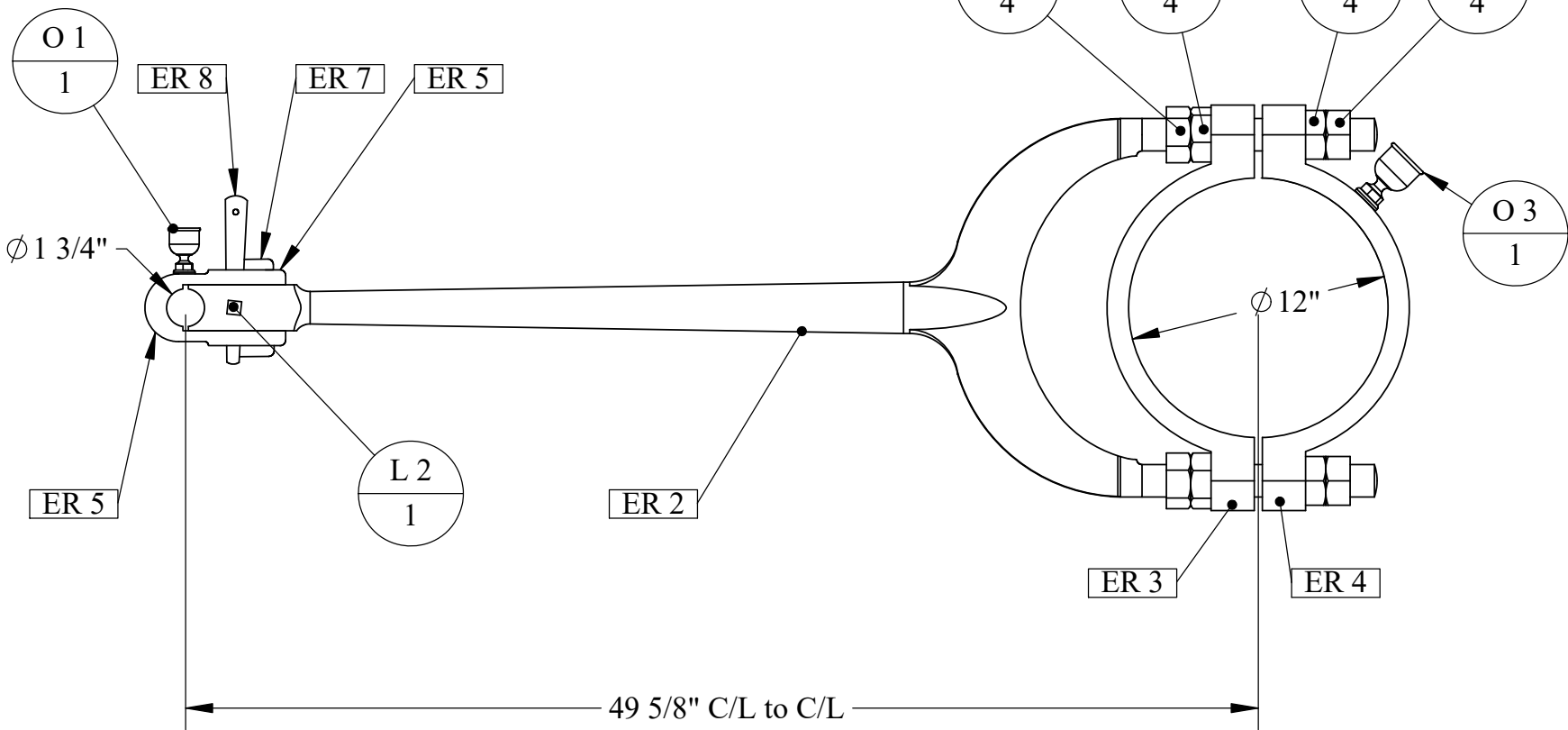
Material	Drawn By - Date	Sub-Assembly
Weight (Lbs)	RWC 12-2018	Eccentric Rods
Scale	Description	
1:8		
Part #		
ER 1-P		

**Eccentric Rod
Assembly-Port**

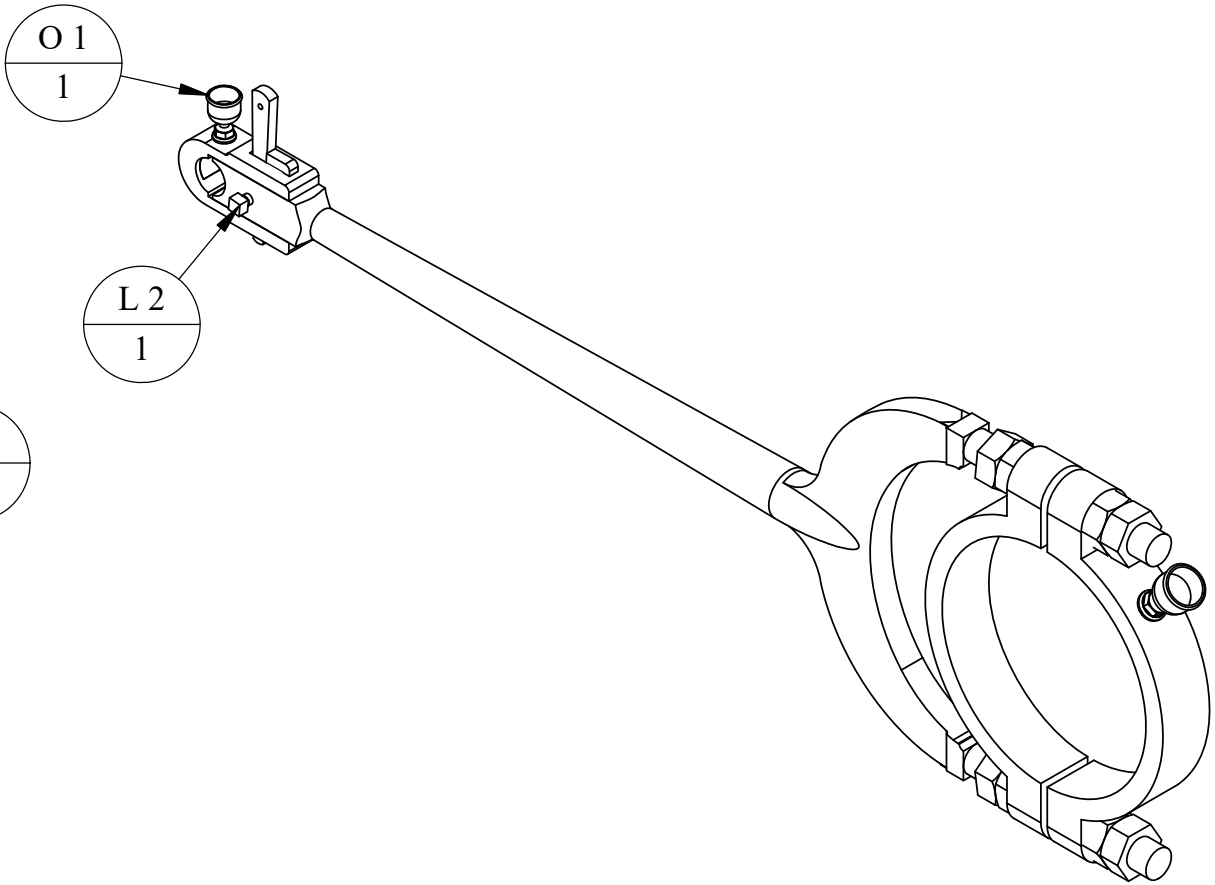


DETAIL OF BABBITT INSERTS (ER 6)
AND GIB AND COTTER INSTALL-
LOCK SCREW (L 2) FOR COTTER
NOT DISPLAYED

SECTION A-A
SCALE 1 : 4

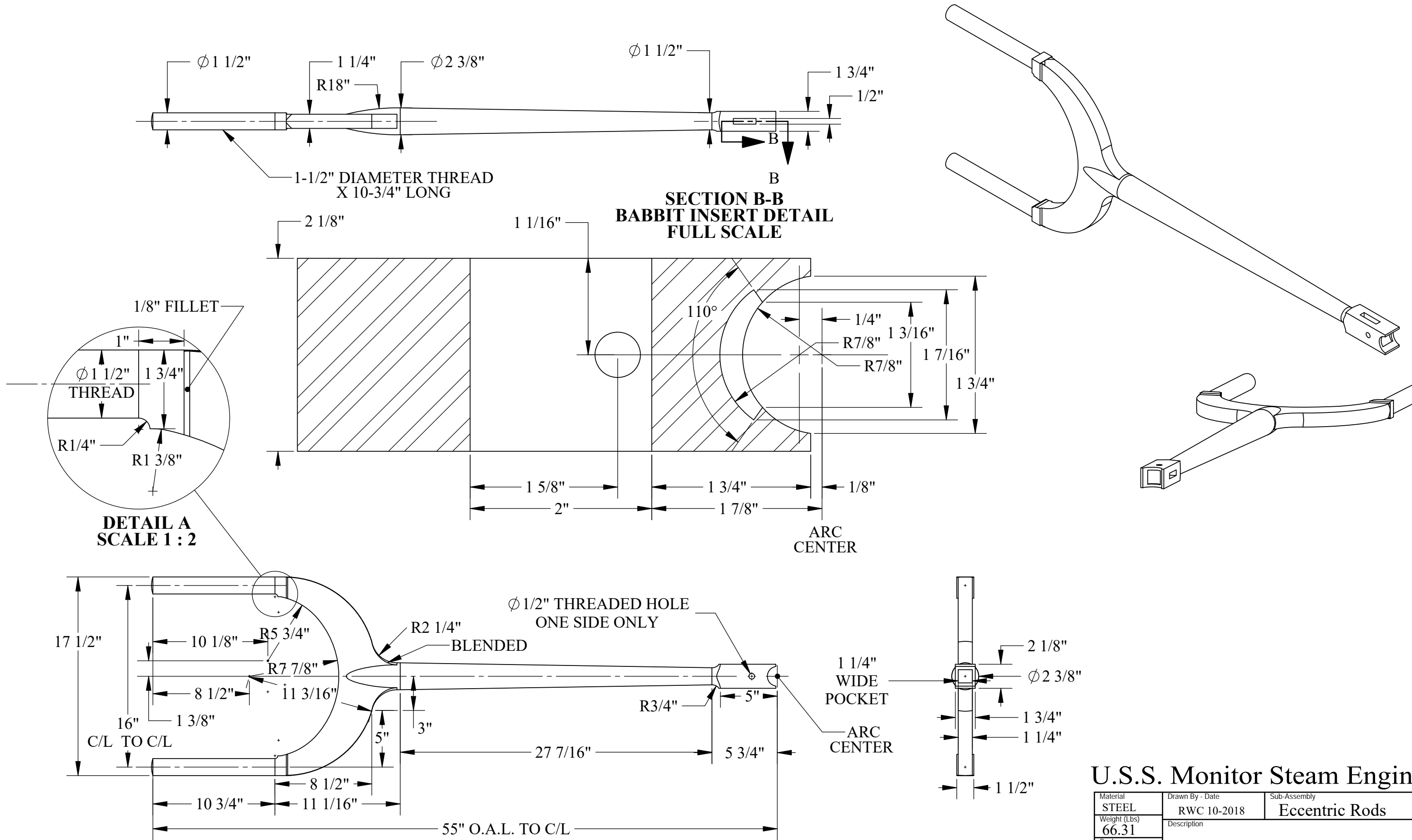


PART NUMBER	DESCRIPTION	QTY.
ER 3	Eccentric Strap	1
ER 4	Eccentric Strap With Lube	1
ER 5	Eccentric Rod Bearing Strap	1
ER 6	Eccentric Rod Babbitt Bearing	2
ER 7	Eccentric Rod Gib	1
ER 8	Eccentric Rod Cotter Pin	1
O 1	Oil Cup- Small	1
O 3	Oil Cup- Medium	1
L 2	Square Locking Screw 1/2" x 7/8"	1
N 12	1-1/2" Hex Nut	4
N 13	1-1/2" Hex Nut-Locking	4
ER 2	Eccentric Rod	1



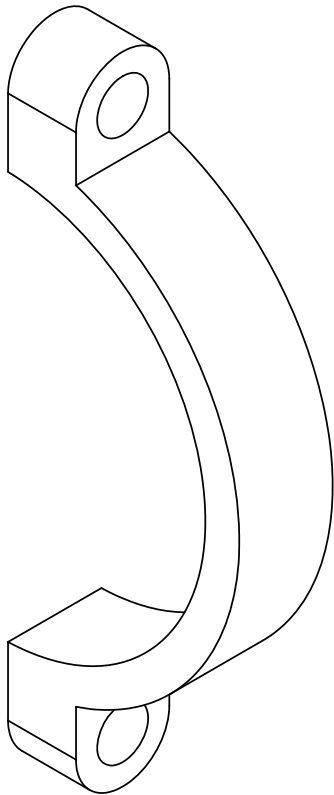
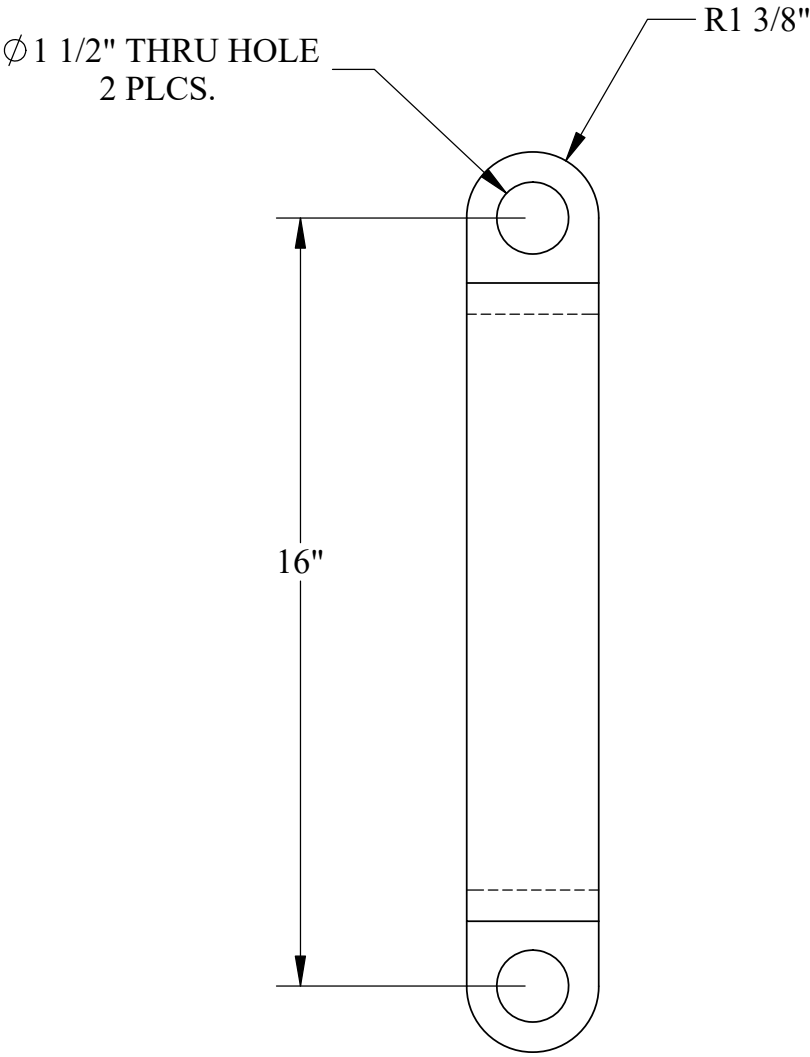
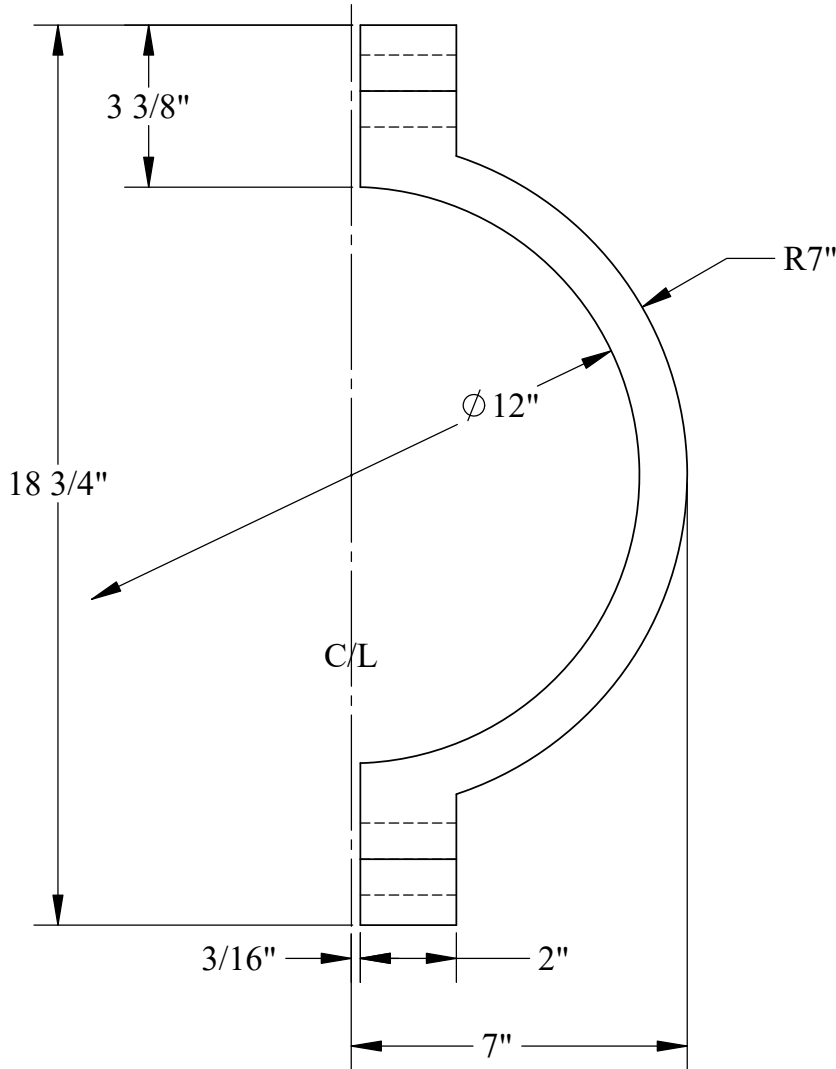
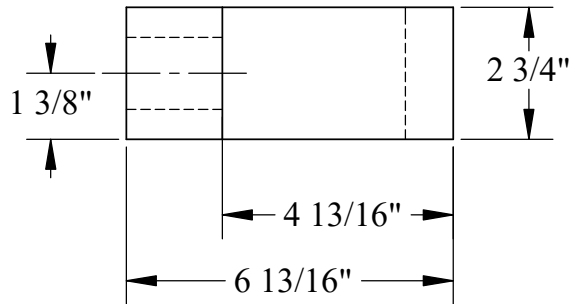
U.S.S. Monitor Steam Engine

Material	Drawn By - Date	Sub-Assembly
Weight (Lbs) 118.46	RWC 12-2018	Eccentric Rods
Scale 1:12	Description Eccentric Rod Assembly-Starboard	
Part # ER 1-S		



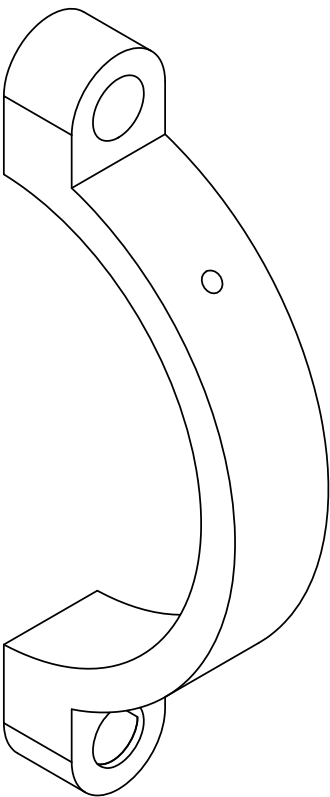
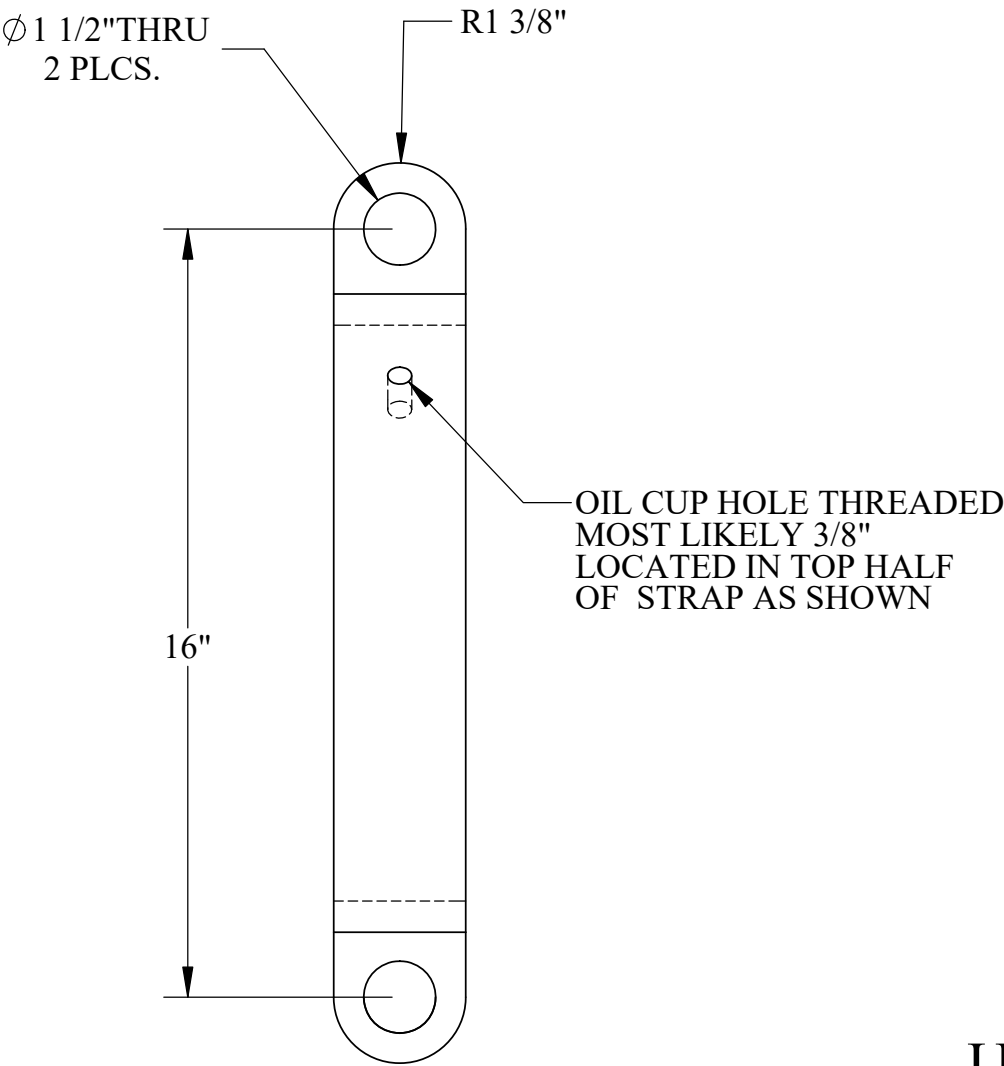
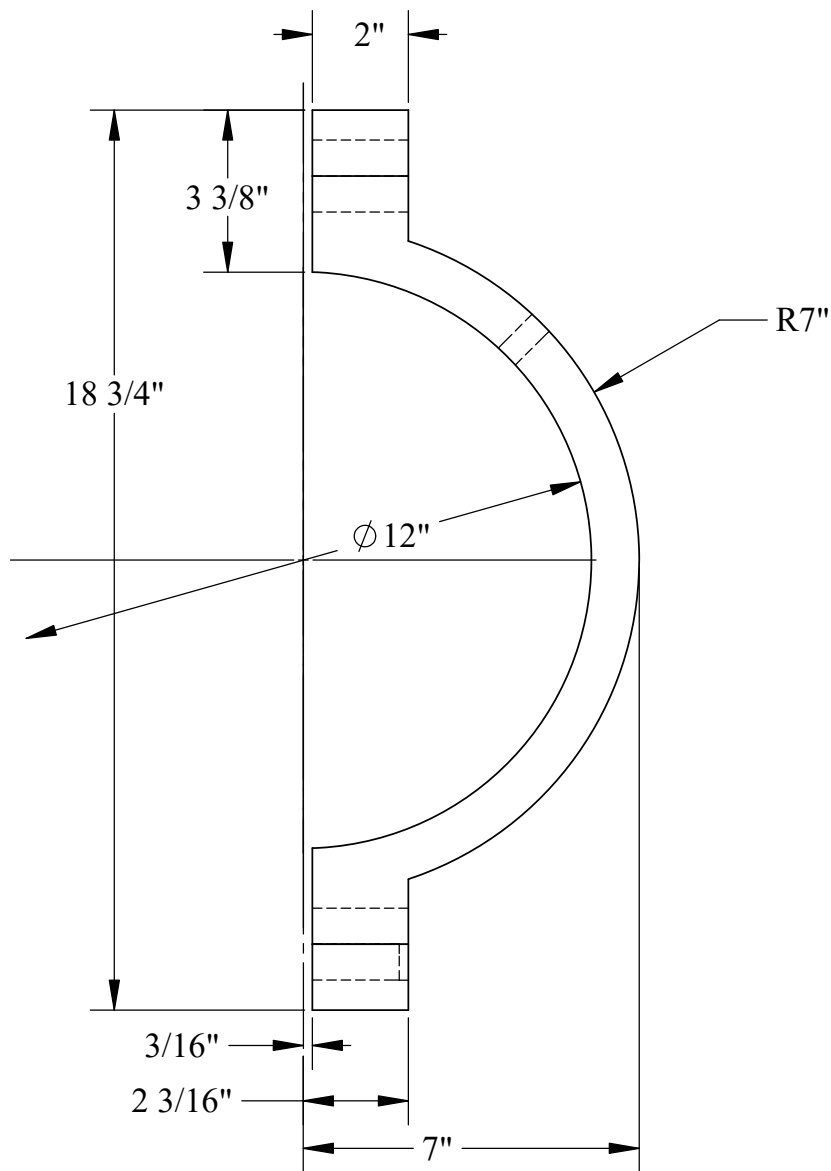
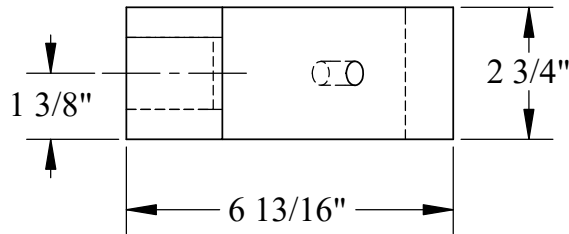
U.S.S. Monitor Steam Engine

Material STEEL	Drawn By - Date RWC 10-2018	Sub-Assembly Eccentric Rods
Weight (Lbs) 66.31	Description Eccentric Rod	
Scale 1:8		
Part # ER 2		



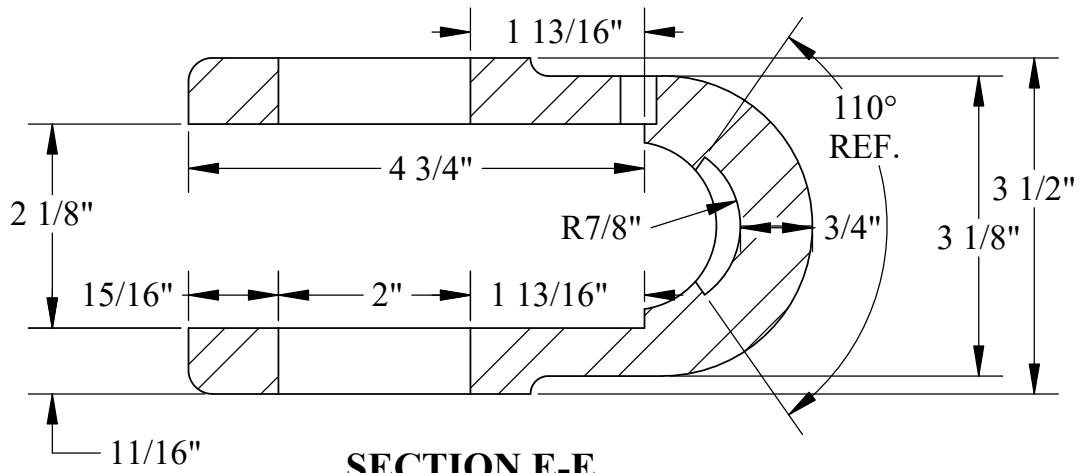
U.S.S. Monitor Steam Engine

Material Brass	Drawn By - Date RWC 12-2018	Sub-Assembly Eccentric Rods
Weight (Lbs) 22.211	Description Eccentric Strap (NON-LUBRICATED)	
Scale 1:4		
Part # ER 3		

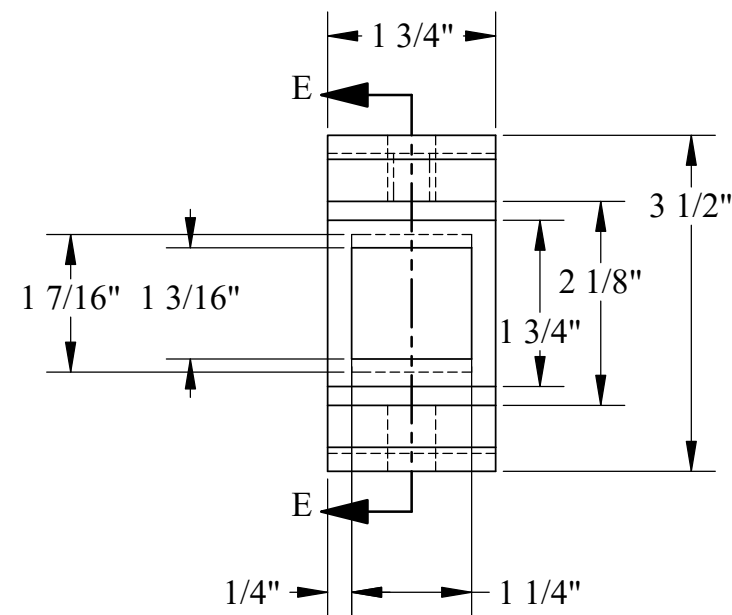
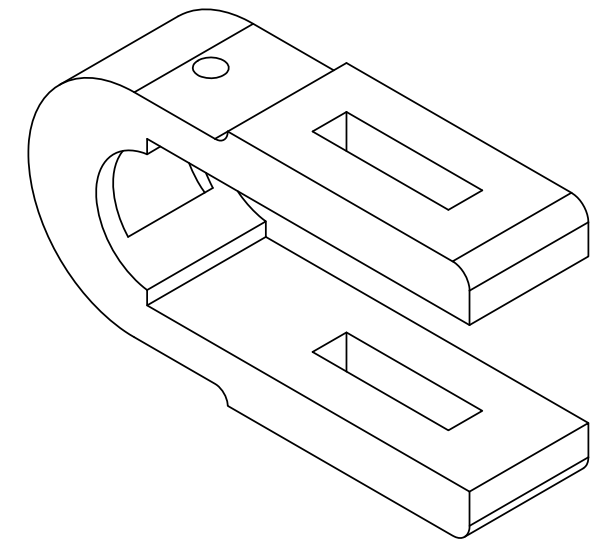


U.S.S. Monitor Steam Engine

Material Brass	Drawn By - Date RWC 10-2018	Sub-Assembly Eccentric Rods
Weight (Lbs) 22.151	Description Eccentric Strap With Lube	
Scale 1:4		
Part # ER 4		

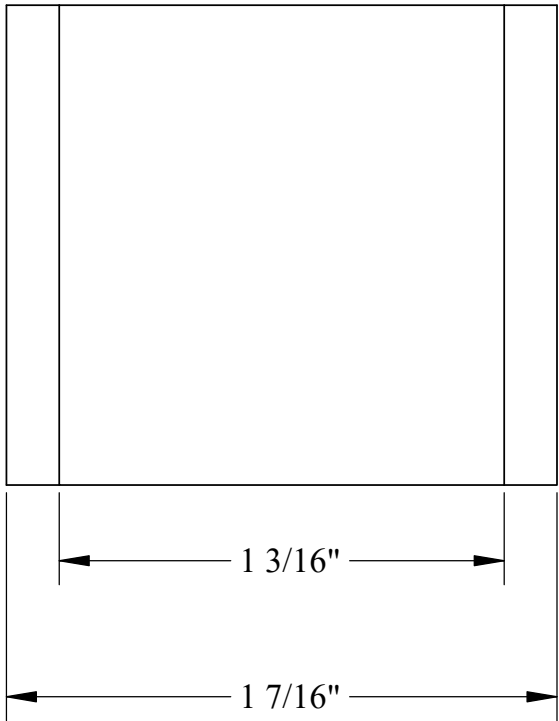
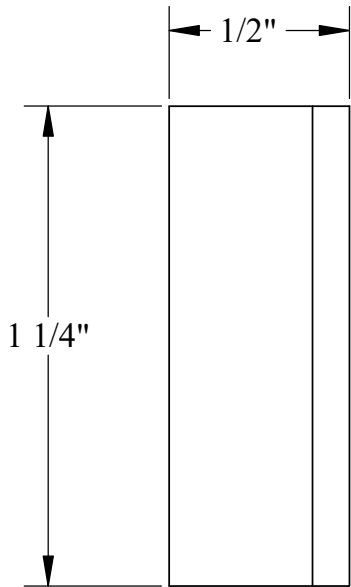
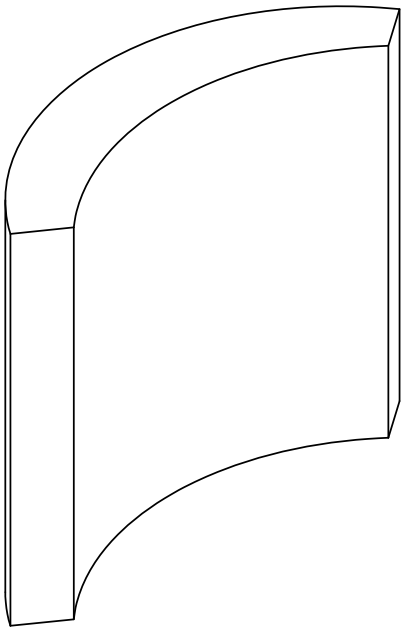
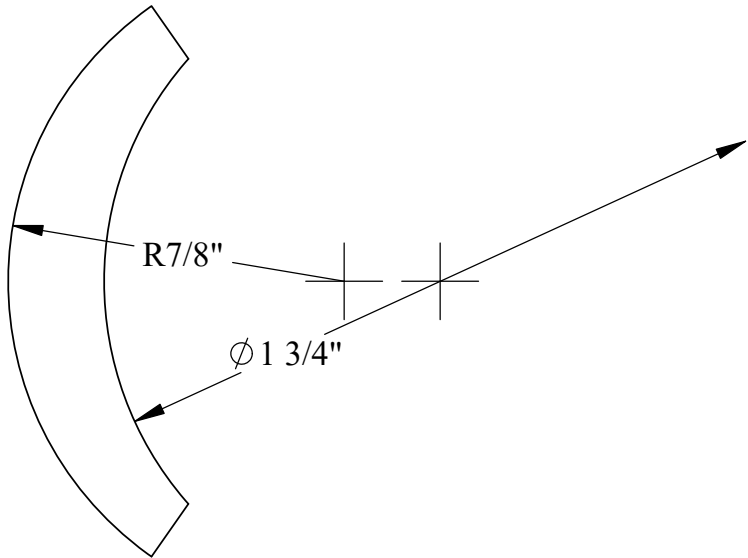


SECTION E-E DETAIL OF BABBIT POCKET



U.S.S. Monitor Steam Engine

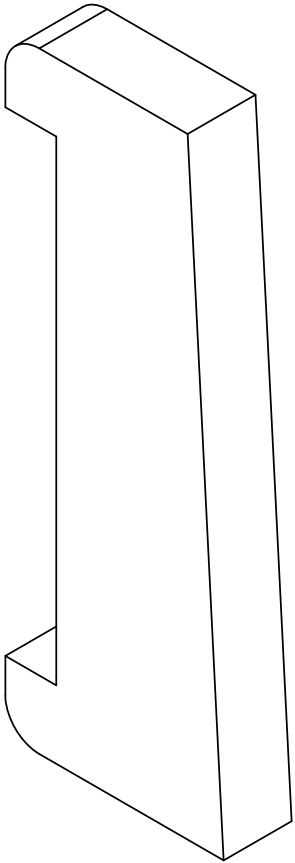
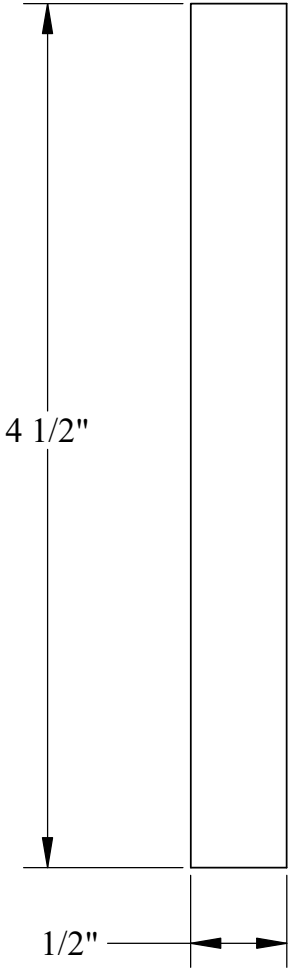
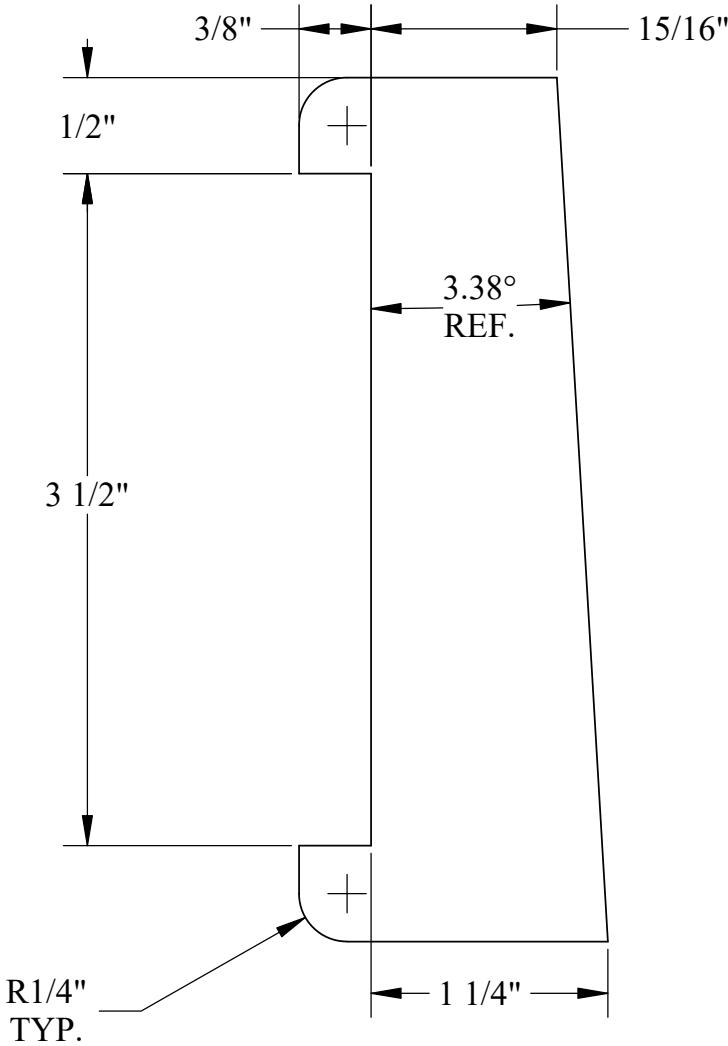
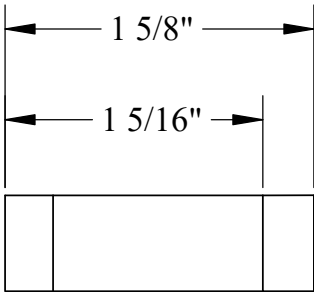
Material STEEL	Drawn By - Date RWC 10-2018	Sub-Assembly Eccentric Rods
Weight (Lbs) 4.23	Description Eccentric Rod Bearing Strap	
Scale 1:2		
Part # ER 5		



NOTE:
THIS PART IS MADE BY CASTING
IN PLACE EITHER USING THE
PART OR A MOLD. THIS DRAWING
REPRESENTS THE GENERAL
DIMENSIONS USED OR OBTAINED

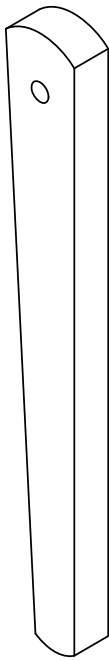
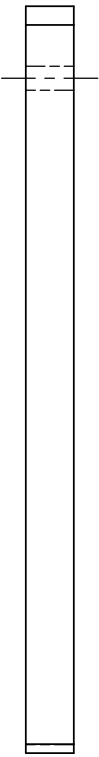
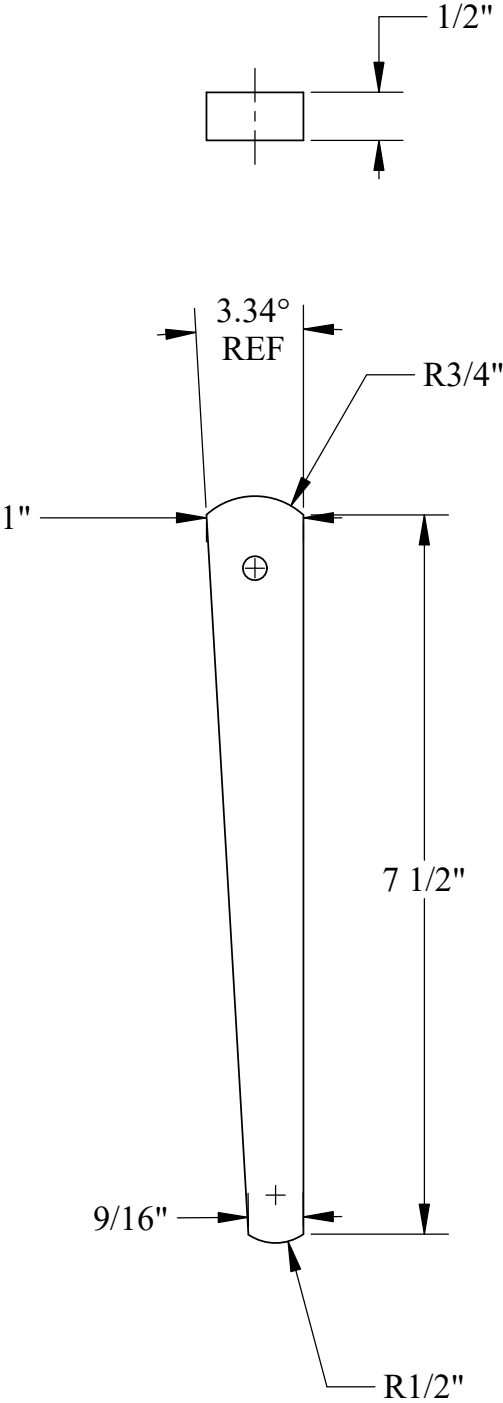
U.S.S. Monitor Steam Engine

Material Babbitt	Drawn By - Date RWC 10-2018	Sub-Assembly Eccentric Rods
Weight (Lbs) 0.11	Description Eccentric Rod Babbitt Bearing	
Scale 2:1		
Part # ER 6		



U.S.S. Monitor Steam Engine

Material STEEL	Drawn By - Date RWC 10-2018	Sub-Assembly Eccentric Rods
Weight (Lbs) 0.76	Description Eccentric Rod Gib	
Scale 1:1		
Part # ER 7		



U.S.S. Monitor Steam Engine

Material STEEL	Drawn By - Date RWC 10-2018	Sub-Assembly Eccentric Rods
Weight (Lbs) 0.86	Description Eccentric Rod Cotter Pin	
Scale 1:2		
Part # ER 8		